

TWIN CITIES CHAPTER

Society of Cosmetic Chemists

FALL 2017, VOLUME 72, NO. 3

Dedicated to the Advancement of Cosmetic Science

2017 OFFICERS

Chair *Samantha Guertin*
Aveda Corporation
4000 Pheasant Ridge Drive
Blaine, MN 55449
sguertin@aveda.com

Chair-Elect *Divyesh Patel*
Aveda Corporation
4000 Pheasant Ridge Drive
Blaine, MN 55449
dpatel@aveda.com

Secretary *Maggie Vold*
Glenn Corporation
300 Jefferson Blvd.
Warwick, RI 02888
mvold@glenncorp.com

Treasurer *Justin Steinke*
Watkins Incorporated
150 Liberty Street
Winona, MN 55987
justin.steinke@jrwatkins.com

House Arranger *Debbie Carroccio*
Univar USA Inc.
845 Terrace Court
St. Paul, MN 55130
651/772-6385
debbie.carroccio@univarusa.com

Newsletter *Chad Pavlis*
Aveda Corporation
4000 Pheasant Ridge Drive
Blaine, MN 55449
763/951-4277
cpavlis@aveda.com



September Meeting Announcement Brewery Tour & Poster Session

Please join us for our September TCCSCC Meeting at Bad Weather Brewing Company in St. Paul. The event will feature educational Brewery Tours encompassing fermentation and scale-up processes as well as an interactive Supplier Poster Session.



Date: Tuesday, September 19th, 2017

Location: Bad Weather Brewing Company
414 7th St W, St Paul, MN 55102
(651) 207-6627

Agenda: 5:30 – 6:00 PM Social
6:00 – 8:00 PM Dinner/Brewery Tours/Poster Session

Menu: Pizza Lucé (Prefixed menu of Pizza, Pasta, & Salads)
Please let us know if you have any dietary restrictions.

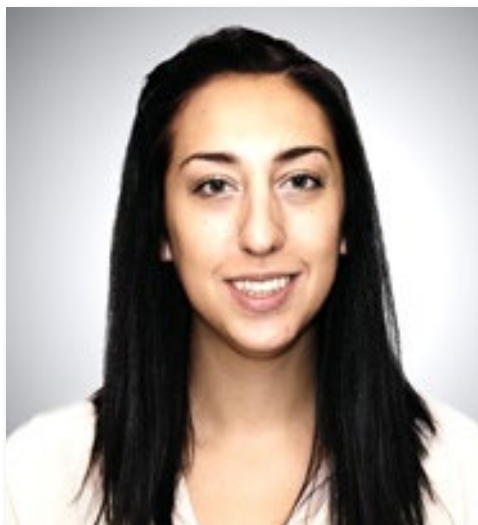
Cost: \$30 (SCC Members)
\$35 (Non-Members)

RSVP and Payment: Payments can be made at the event (day-of) or through the TCCSCC website at www.tccsc.org

Please register for the event by September 15th at
<https://goo.gl/forms/A5ChTDVwATE4rBE3>



SCC Twin Cities Chapter Chair Chat



Greetings TCCSCC Members!

I hope everyone has been enjoying the lovely weather we've been having this summer! The weather was an especially good sport during our Annual Golf Outing this past June which was quite the success. This year we had 96 golfers register for the event, which was our biggest turn out in years! Thanks to our many sponsors for their generous support as well as a great thank you to Steve Beauchaine and Phil Leith for their time and effort spent coordinating this event. Lastly, thank you to everyone who came out and enjoyed this event, your attendance and support truly made this event a great one!

As we transition into the fall season this also comes with a jam-packed TCCSCC schedule. Our upcoming chapter meeting will be held on September 19th at Bad Weather Brewing Company in St. Paul. The event will feature educational brewery tours encompassing fermentation and scale-up processes as well as an interactive Supplier Poster Session. The poster sessions are an excellent way to learn about new technology and ingredient highlights in a short period of time. Please visit the TCCSCC website to register for the event. There are still some supplier poster slots available however they are limited, please contact TCCSCC Secretary Maggie Vold (mvold@glenncorp.com) by September 8th for more information. In addition, Area III director Michelle Hines will be visiting our chapter during our September meeting; I hope many of you are able to join us for this fun event!

Continuing into the autumn season we will have monthly meetings on October 17th and November 21st. November will serve as the chapter officer installation meeting along with a speaker portion. The board is still netting out speakers for these events so if you have a suggestion for an interesting speaker or speaker topic, please let us know! The Holiday Party will be held on Tuesday, December 5th and keeping up with our annual tradition, the venue will be the Roseville Radisson. This event is certain to be a fun-filled casino night and be sure to keep on the lookout for some new casino games at this event! Finally, the 71st Annual Scientific Meeting & Technology Showcase will be held on December 11 – 12th at the Westin New York at Times Square. This 2 day event is full of interactive educational experiences from an esteemed panel of innovators and thought leaders providing pertinent details on cosmetic science research, trends, and regulations. I hope to see you there!



LEITH
SOURCING

*We search & procure
the finest ingredients
the world has to offer*

763-269-2399

WWW.LEITHSOURCING.COM

SCT SOUTHERN CHEMICAL & TEXTILES

www.southern-chemical.com

a specialty chemical company
combining science and consumer
focus to yield next level products

BETAINES

SULTAINES

SULFATES

AMINE OXIDES

AMPHOTERICS

AMIDES

SPECIALTY ANIONICS

CONCENTRATES



653 Peek Rd, Dalton, GA 30721

706-277-3993

Orchidia
Fragrances

Ask about our
trends for 2018



The **Natural** Choice.

STRAHL & PITTSCH INC.

• BEESWAX • CANDELLILLA • CARNAUBA • CERESINE •
MICROCRYSTALLINE • OZOKERITE • PARAFFIN

• EMULSIFYING WAX • NATURAL WAX JELLIES • NATURAL WAX BUTTERS • LAUREL WAX •
ECOCERT WAXES • ORGANIC WAXES • PURESTERS • RICE BRAN WAX • VEGERITE WAX

Finest Natural Waxes Since 1904

custom formulations available at www.spwax.com

230 Great East Neck Rd. • West Babylon, NY 11704 • USA • Tel# 631-587-9000 • Fax# 631-587-9120

As we head into the new year please ensure that you reinstate your membership and update your contact information with the SCC. Please visit the member portal at www.sconline.org to do so. Your username is your email on file and your password is your initials in caps followed by your membership number. Please send your renewal in as soon as possible so that you are counted in the annual membership retention contest. If you are a member who is leaving the industry please choose to resign your membership so that you will not need to pay a reinstatement fee if/when you return to the SCC as a member. If you are currently unemployed and have been a member in good standing for five years, National is currently offering a one year waiver of dues – please contact Colleen Daddino for more information on this offer (cdaddino@sconline.org).

Lastly, it's time for us to start looking for members who might be interested in serving as Chapter Officers for 2018! Being a part of the TCCSCC is a great opportunity to become more involved in the local SCC and to share your talents and ideas with the organization! It also presents the ability to grow personally and professionally while developing leadership skills. If you are interested in running for Chair-Elect, Secretary, Treasurer, or volunteering to serve as House Arranger or Newsletter Editor, please let us know! Nominations for the 2018 officer positions are due on September 15th, please contact Maggie Vold (m vold@glenncorp.com) as soon as possible to get your nomination in! We are incredibly excited to see what great things come from the 2018 board!

As always, please let me know if you have any questions, suggestions, or comments. I hope to see you all at Bad Weather Brewing for our September Meeting!

Thank you,

Samantha Guertin

Twin Cities Chapter Chair 2017



Mark your Calendar!

UPCOMING MEETING DATES FOR 2017

SEPTEMBER 19, 2017

TCCSCC Monthly Meeting
Brewery Tour & Poster Session
Bad Weather Brewing Company
St. Paul, MN

OCTOBER 17, 2017

TCCSCC Monthly Meeting

NOVEMBER 21, 2017

TCCSCC Monthly Meeting and
Officer Installation

DECEMBER 5, 2017

TCCSCC Holiday Party

DECEMBER 11-12, 2017

National Scientific Meeting and Supplier
Showcase - 71st Annual



MMP continues to develop and manufacture specialty actives and customized raw materials for cosmetic innovation.

Michel Mercier
Founder
MMP, Inc.

sales.us@mmpinc.com | www.mmpinc.com



Providing specialty ingredients to the Personal Care Industries

Omya Specialty Materials, Inc.
www.omya-na.com
tel (562) 961-3333
rachel.bowens@omya.com

Integrity Ingredients Corporation

"Where Quality and Service Meet"

Introducing our NEW...
IntegriWAX Natural Base

- Quality Raw Materials
- Exceptional Customer Service

Let us help you with your formulation needs!

Integrity Ingredients Corporation • www.integrityingredientscorp.com • info@integrityingredientscorp.com • (877) 765-0282

2018 Call for Officers

We are looking for current TCC SCC Members to run for the 2018 chapter officer positions. This is a great way to become more involved in the Twin Cities Chapter of the SCC! If you are interested in running please contact Maggie Vold (mvold@glenncorp.com) as soon as possible.

Below are the open positions and descriptions of the positions:

CHAPTER CHAIR-ELECT

- This is a 2 year commitment position. The position of Chair-elect is a learning position for the person who will assume Chapter leadership at the conclusion of the Chair's term. The more involved the Chair-elect is in the activities of the Chapter, the easier it will be for the person in that position to assume overall responsibility. The Chair-elect, as an Officer of the Chapter, is authorized to sign contracts on behalf of the chapter and to sign checks issued for valid Chapter expenses. The Chair-elect has the fiduciary responsibility to see that members' monies are appropriated according to Society Policy.
- The Chair-elect is a member of the Area Council and a member of the Committee on Chapter Affairs.
- The Chair-elect will be called upon to fill in during the absence of the Chair.
- Various duties are assigned to the Chair-elect in accordance with established Chapter practices and in accordance with Chapter Bylaws. It is important that the Chair-elect read the Chapter Bylaws and specifically consult those sections of this manual which apply to any responsibilities which he or she might be given.
- The Chair-elect should be responsible for the Chapter programs during his term as Chapter Chair therefore his planning efforts in this area should begin with his term as Chair-elect.
- The Chair-elect is also responsible to see that the officers adhere to Society Policy regarding scholarships and charitable donations.

CHAPTER TREASURER

- This is a 2 year commitment position. The Treasurer must work closely with the Chair and be involved in House, Program, Social, Awards, Newsletter and Publicity since all involve the expenditure of funds as well as the collection of income.
- The Treasurer has the responsibility for accurate

record keeping, for working with the Chair and other Chapter Committees in developing budgets (the operating budget as well as budgets for special events) and in monitoring all income and expenses. In addition, helping to prepare IRS forms, if necessary, and for the maintenance of checking, savings or investment accounts.

- The term of Treasurer will be from January 1 to December 31. The Treasurer will act in an advisory capacity to the new Treasurer for three months after his term of Treasurer ends (until March 31st.)
- The Treasurer is also responsible to see that the officers adhere to Society Policy regarding scholarships and charitable donations.
- The Treasurer should keep accurate records of the menus, cost of meals, etc.

CHAPTER SECRETARY

- The Chapter Secretary is responsible for ensuring the Minutes of all Chapter Board meetings are prepared and distributed. The Secretary, as an Officer of the Chapter, is authorized to sign contracts on behalf of the chapter and to sign checks issued for valid Chapter expenses. The Secretary has the fiduciary responsibility to see that members' monies are appropriated according to Society Policy.
- Ensure that all Minutes of the Executive Committee and Board meetings are sent to Area Directors and to the SCC National Office.
 - 1) Notify the National Office with the names of potential candidates running for Chapter Office in order that their membership status can be verified before the ballots are printed. (Officer Eligibility Form)
 - 2) Ensure that ballots are mailed according to Chapter Bylaws and that when the address label file is requested from the Nation Office for Chapter elections, that the request is made for "voting members".
 - 3) Notify National with the results of the Election, including the name, address, phone, fax, and e-mail of the newly elected Officers.
- The Secretary is also responsible to see that the officers adhere to Society Policy regarding scholarships and charitable donations.

We are also looking for volunteers to fill the positions of House Arranger and Newsletter Editor. If you are interested in either of these positions or would like more information, please contact me, Maggie Vold (mvold@glenncorp.com).

Pictures from the 2017 Golf Outing



32 years creating miles of smiles
for you (and your boss)

For a complete list of
products and applications,
visit us at www.fitzchem.com

Fitz Chem Corporation
The Customer Centric Specialty Chemical Distributor

BASF **IMERYS** **K** **Shin-Etsu**

BRENTAG
SPECIALTIES

Connecting **Chemistry**

**ENJOY SUCCESSFUL
PARTNERSHIPS**

Brenntag Specialties, Inc.
24012 W. Renwick Rd., Ste 200
Plainfield, IL 60544, Phone: 800-833-8140

Fine Ingredients, Minerals, Colors,
Surface Treatments, Proteins, Powders

www.brenntag specialties.com

TH HILSON
A Harsco Company

*Your Trusted Partner for
Chemical Solutions*

With decades of experience,
technical expertise, extensive market
knowledge and our long-standing
innovative partnerships, TH Hilson
can source the specialty ingredients
you're looking for!

1761 S. Naperville Road, Wheaton, IL 60189
630.665.3085 | www.thhilson.com



**High demand personal care
ingredients to inspire you.**

- Argan Oil
- Red Palm Oil
- Sweet Almond Oil
- Jojoba Oil
- Tea Tree Oil
- Natural Silicone Alternative
- Natural Lanolin Alternative

Find more info at
www.charakit.com

charakit Chemical Corporation
The Specialty Chemical Specialists

The Perfect Blend

Laurichem combines industry
expertise with fine ingredients to
the cosmetic and personal care
industry.

LAURICHEM

175 East Delaware Place, Suite 8609
Chicago, IL 60611
P 312.335.1339
www.laurichem.com



Pictures from the 2017 Golf Outing (cont.)



Pictures from the 2017 Golf Outing (cont.)



2017 Golf Outing Winners


Congratulations to the winners of the golf outing this year!

1st place; score 59 (-13)...Brian Goode; Jeff Reed; Tom Goode; Kevin O'Malley
2nd place; score 60 (-12)...Carter Silverman; Minh Tran; Shafeek Razac; Michael Neighbor
Long Putt: Brian Goode; Lori Blake
Closest to the Pin: Shafeek Razac; Kari Witt
Closest to the Line: Kevin O'Malley; Deb Zopel
Long Drive: Steve Reider; Ann Gander

2017 Golf Outing Supplier Contributors

A huge THANK YOU to the supplier contributors for the 2017 Golf Outing. We couldn't have done it without you. We would also like to give a big THANK YOU to Steve Beauchaine and Phil Leith for once again organizing this great event!

AAK USA, Inc.
AIC, Inc.
Barton Solvents
BASF
Brenntag
Caribbean Natural Products
Chem/Serv, Inc.
Colonial Chemical
Essential Ingredients
FitzChem
Fragrance West
Gattefosse
Geocopia
Glenn Corp.
Holland Applied Technologies
Horn Company
Integrity Ingredients Corp.
Laurichem
Leith Sourcing
Lubrizol
Pharmaceutical Specialties, Inc.
RITA Corp.
Univar




ACTIVES
INTERNATIONAL, L.L.C.

ViaPure® • ViaFermi®

High purity extracts & ferments
Natural & sustainable

201-236-2828
www.activesinternational.com



INNOSPEC Provides

- Silicones
- Specialty surfactants
- Benzoate esters
- Guars
- Conditioning agents
- Dispersants

Contact us today:
888-633-8028

innospec
Touching Everyday Lives

**BOTANICAL
EMOLLIENTS
& SPECIALTY
PARTICLES**

ISO 9001



The Natural Solution

iLabel®
www.floratech.com/info

FLORATECH®
www.floratech.com

In the Twin Cities SCC Region:

TH Hilson
Crystal Rampaul | 800.665.3087
crystal@thhilson.com



DD Chemco inc.

Providing specialty and commodity ingredients to the personal care industry for 45+ years

Custom Innovation
Technical Support
Trend Forecasting

Nick Dindio
Account Manager

(818) 493-6112
(916) 337-2884
ndindio@ddchemco.com
www.ddchemco.com

Ticket Monster Perks for SCC Members

Ticket Monster Perks is our new entertainment benefit platform that offers you exclusive discounts on hotels, sports, concerts, theater, movie tickets and theme park tickets nationwide. Follow these three easy steps below and start saving today!

1. Go to www.ticketmonsterperks.com
2. Sign up & save \$5 on your first order & earn cash back with each purchase!
3. Start searching for discounted sports, concert and theater tickets nationwide

*If prompted, enter your company identifier: **SCC17**

Bringing a group of friends? Give us a call and we can do the work for you!

Feel free to contact the Ticket Monster team at any time by calling (866) 217-4777 or emailing service@ticketmonster.com.

Enjoy using Ticket Monster Perks for all of your event ticket needs!



WWD

FASHION. BEAUTY. BUSINESS.

WWD Offer for SCC Members

<http://wwd.com/SocietyofCosmeticChemistsWWDsub>

Fashion, Retail, Luxury and Beauty industry professionals have been reading WWD for over 106 years, as it is the leading source of global business intelligence. This iconic brand maintains its long-standing commitment to delivering the highest quality news and information to serve an ever-evolving industry and help its readers proactively identify the social, cultural, technological and economic developments that influence their daily decisions.

The offer for SCC members includes both a curated Digital Daily edition each day in your in-box featuring the trending new headlines, as well as access to the WWD website for a greater commitment to all fashion, beauty, luxury and retailing channels. With its immersive reading experience and instant distribution, the Digital Daily serves the entire fashion industry across 84 countries. And the 24/7 upload of features on the site allows WWD to quickly deliver the most important international news.

Being an SCC Member, you can subscribe to Women's Wear Daily for **\$129 a year**. As a point of comparison, non-member subscribers pay \$159 for an online or Digital Daily print subscription and \$199 for a combination of both.

**Open
your
eyes.**

Suga®Nate 160NC
Sodium Laurylglucosides Hydroxypropylsulfonate

- **Lowest*** eye irritation score
- 100% naturally-derived
- EO-free, palm-free, biodegradable
- High-foaming
- Ships without preservatives


 **Colonial
Chemical**

Visit www.colonialchem.com

*Results for both HET-CAM and MatTek EpiOcular™ are Zero, indicating no ocular irritation potential in vivo. Complete testing information available upon request.
Suga® is a registered trademark of Colonial Chemical Inc. EpiOcular™ is a trademark of MatTek Corporation. © 2010 Colonial Chemical Inc.



WWD



**The Global Authority on Fashion,
Beauty and Retail**

WWD is the unrivaled source of breaking news, in-depth market analysis, defining fashion moments, and renowned imagery.

MIDWEST **SCC** TEAMWORKS'18

The premier industrial trade show for the personal and home care industries in mid-America.



Early Exhibitor Registration Open for April 11, 2018 Event

Register before November 30, 2017 and save \$100!

Donald E. Stephens Convention Center
5555 N. River Road, Rosemont, IL 60018
Exhibitor Hall Hours: 12-6 PM

Reach hundreds of chemists in the cosmetic, personal care, home care, pharmaceutical and allied industries!

EXPANDED EXPO AUDIENCE

This event draws scientists, engineers, entrepreneurs and other professionals from throughout the mid-western United States. This is a major opportunity for you to introduce your new products and technology to the personal and home care industry.

Leading personal care & home care research groups including Amway, Kimberly-Clark, Kao, S.C. Johnson Company, and a host of scientists from equally vital firms will be attending.

Educational programs are scheduled to draw more and different people to the 2018 event. In addition, Teamworks 2018 is extending market penetration for this event to persons in related industrial positions who will benefit from the knowledge and purchase of your products and services. You will see professionals from household, pharmaceutical, and other allied industries in attendance as well as familiar cosmetic industry contacts.

TEAMWORKS 2018 WORKS TO MAKE YOUR EXHIBIT SUCCESSFUL

Aggressive promotions through major trade publications, direct mail, e-mail blasts, section newsletters, and phone calls guarantee that your prospects will visit your booth.

With 6 hours of exhibit time you have ample opportunities to reach prospects and customers. Just minutes from O'Hare Airport, the Donald E. Stephens Center location is central to your Chicago area contacts as well as those coming from out of town

Booth space is available in 10 x 10 foot square sections, which includes carpeting, electricity, one draped table, two chairs, wastebasket, standard booth sign, and 500 watt electrical outlet. In addition, there are ample meeting areas outside your booth to make this one day event as productive as possible.

Cost per 10x10 space is \$1,095 before November 30th and then \$1,195.

[Register Here](#)

Innovation
Comes
Naturally

kinetik
www.kinetiktech.com



Your source for speciality
chemicals worldwide



RITA

RITA Corporation
850 South Route 31
Crystal Lake, IL 60014 USA
T 815.337.2500 or toll free 1.800.426.7759
F 815.337.2522

www.ritacorp.com